

LONG POND LODGE



ADIRONDACK- CHAMPLAIN GUIDE SERVICE



FISHING • ICE FISHING
LODGING • MEALS

THE NORTHEAST'S #1
GUIDE SERVICE

COVERING CLINTON, ESSEX, AND
FRANKLIN COUNTIES OF THE
ADIRONDACKS AND LAKE CHAMPLAIN

"WE HAVE NEW YORK'S
FINEST GUIDES."

COME ON UP TO NORTHEASTERN NEW YORK.

Our experienced and NYS licensed guides will put you over fish any time of the year.

Fishing parties of one to three people will be assigned their own guide because we just don't believe in crowded boats.

You'll find that fishing with one of our guides is more like fishing with an old friend.

Our guides do all types of fishing, but we specialize in "Lite Tackle."



"PICK YOUR FIGHT... CHALLENGE OVER 20 SPECIES OF GAME FISH."

Up here in the North Country, we give you more ways to catch more kinds of fish.

Choose from fly fishing, spin casting, downrigger trolling and even ice fishing.

With better than 20 kinds of fish, it's not uncommon to tie into a real tackle buster.

Our Lake Trout top 10 pounds. Landlocked Salmon and Brown Trout run big too. Steelhead, no matter what size, will burn up reels.

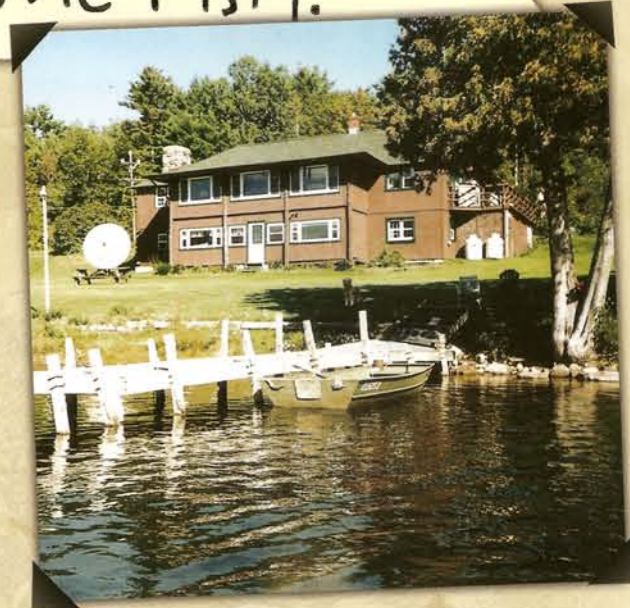
You'll also fish for Muskie, Northern Pike, Walleye, Large and Smallmouth Bass, and all kinds of panfish.

Even our Roughfish are game fish - we offer fishing for Carp, Gar and Bowfin.

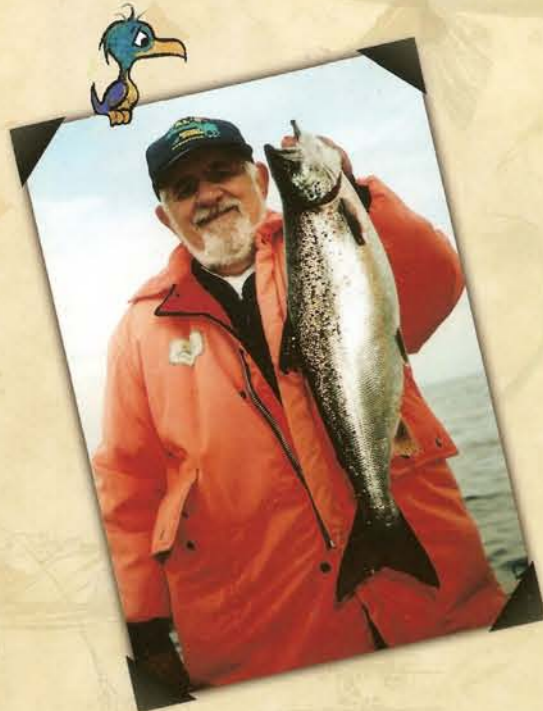
We know you'll want to get as much fishing in as possible. So every day we fish for a full 8 to 10 hours. Nothing beats a big day fishing and an evening of fish talk at the Lodge.

When winter rolls around this is truly beautiful country, but not necessarily cold, since the action is so fast.

You can fish for Northern Pike, Walleye, Lake Trout, Salmon, Perch and Smelt.



"Our water may freeze, but the fishing never gets frigid."



"There's no such thing as a half day."



Long Pond Lodge

Our picturesque Lodge is sandwiched between Pok-O-Moonshine and Rattlesnake Mountains, nestled on the shore of placid Long Pond.

This Adirondack pond covers 400 acres and is a mile and a half long. The pond is teeming with Largemouth Bass, Smallmouth Bass, Northern Pike, Yellow Perch, Sunfish and Crappie.

If you choose our Combination Package or our Lodging & Meals Package, free use of a rowboat is always provided.



"AND ONE OF
AMERICA'S GREAT LAKES."

We like to think of Lake Champlain as the "sixth" Great Lake. It's a massive body of water skirting the beautiful Adirondack Mountains.

We also fish in the Adirondack Park, which has over 6 million acres of untouched forests mirrored in thousands of ponds and lakes. Our guides know where all the best ponds and small lakes are located.

"Plenty of fishable rivers."

If you're into river fishing, come fish the legends: the AuSable, Saranac, Bouquet, Chateaugay, Salmon and the Chazy. When you wet a line in these waters, be ready to tackle a hefty salmon or trout or other big fish!

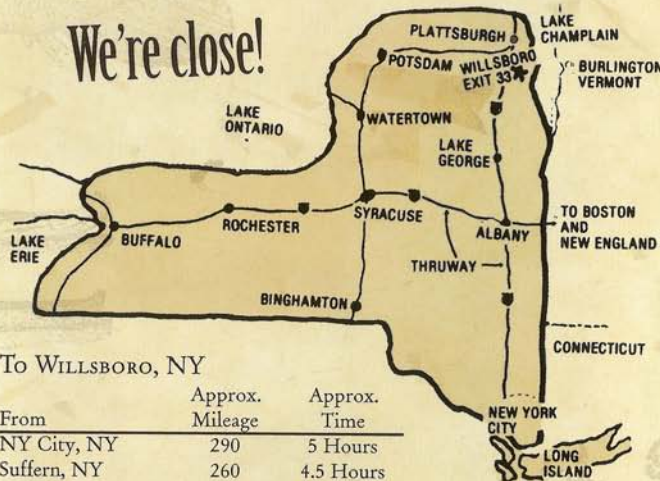
UNBEATABLE RATES

Whether you choose Guide Service only, Lodging and Meals only or our Combination Packages with both, no other Guide, Charter Service or Lodge can beat OUR rates!!!

Phone: (518) 963-7351

"THE ONLY THING
THAT BEATS
OUR FISHING
IS OUR PRICES."

We're close!



To WILLSBORO, NY

From	Approx. Mileage	Approx. Time
NY City, NY	290	5 Hours
Suffern, NY	260	4.5 Hours
Albany, NY	135	2.25 Hours
Newark, NJ	290	5 Hours
Worcester, MA	260	4.5 Hours
Philadelphia, PA	377	6 Hours

WE ARE LOCATED ON ROUTE 22 JUST
SOUTH OF NORTHWAY EXIT 33

For reservations and any additional
information, call, write or go on line:

Pete Casamento
Adirondack-Champlain Guide Service
4629 NYS Rte. 22, Long Pond Lodge
Willsboro, New York 12996

Phone: (518) 963-7351

Web: www.adirondackchamplainguideservice.com

Visa and MasterCard accepted • N.Y.S. and U.S.C.G. Licensed

